

Response of Participants

- The Credit Unions at the BDS training have run members empowerment by forming members enterprise in community and individual
- The Credit Unions form the members into group just to facilitate loans dan savings transaction
- Credit Union Members run their own business without assistance from Credit Union

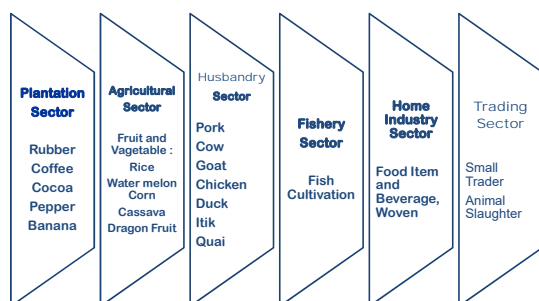


MEMBERS BUSINESS COMMUNITY

Credit Union Betang Asi



Type of Members Business Community



List of Members Business Community CU Betang Asi

No	Type of Business Community	Total Community	Total Member
1	Pig Livestock	133	854
2	Chicken Livestock	14	84
3	Cow Livestock	2	15
4	Goat Livestock	2	11
5	Beje Pool	2	17
6	Fish Cultivation	6	35
7	Rubber	10	74
8	Bamboo and Rattan Woven	1	5
9	Water Melon Farmers	2	10
10	Trading	2	11
Total		174	1.116

**Training Activities of
Fermented Pig Feed**



**Training Activities of
Fermented Pig Feed**





**STUDY VISIT TO
CU. SAUAN SIBARRUNG**





BUSINESS DEVELOPMENT SERVICES OF CU. SAUAN SIBARRUNG

- Credit Union Sauan Sibarrung is one of Credit Union of Indonesia that has implemented Business Development Services.
- Credit Union Sauan Sibarrung forms community by encourages village community through business development. It is started from home industry.
- Every community has activist and he should be the role model in running a business
- Provide training by giving them the business knowledge and skills to develop the quality of the product
- Creating BDS systems








KASUNGAN SIBARRUNG

Members Business Center





CU. SAUAN SIBARRUNG Support for the Members' Business



Training and Analysis Center of Members' Business Product





Provide Cooperation Market Link Among the Members





**Member's Produk marketed
in Tokina**





**MEMBERS COMMUNITY OF
CU. SAUAN SIBARRUNG**





MANNA COMMUNITY





- **Manna** means cooperation
- Established since 2017
- Consist of 10 women in a village
- The land was planted with various type of plants. The business capital being supported by Credit Union
- The women get support from Credit Union on good farming process
- Get the market linkage and information to sell their crop





Manna Community





Manna Community





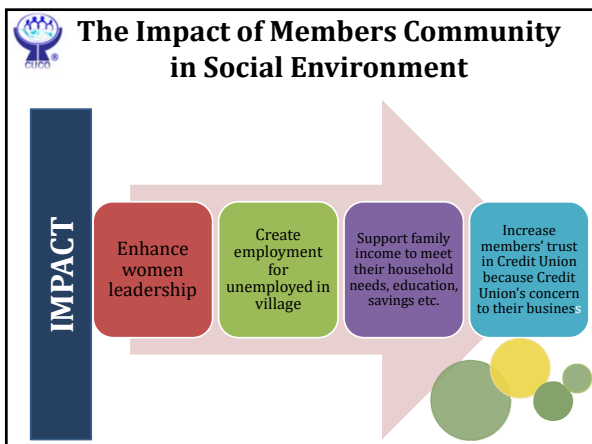






The Benefit of Community for Members

1. Easy access to the Business Loan
2. Enterprise development support
3. Getting Training & Technical Assistance to Manage members' business
4. Getting Market Linkage and information
5. Sharing business Idea within Community





What we will do and Change...

Recognize the importance of Business Development Services in improving the quality life of the members, the participants arranged the action plan that will be implemented BDS started from their Credit Union.

- Institutionalize Business Development Services at the Credit Union Level
- More Intensive in assisting the members in their Business
- Arrange work plan at Chapter and Primary Credit Union to support BDS program
- Implementing Business Development Services Work plan on 2020





What we will do and Change...

- BDS to be the main fokus on the next work program
- Conduct BDS Training
- Arrange BDS Tools
- Monitoring and Evaluation on the implementation of BDS





What we will do and Change...

- Promote the BDS to the Baords and members
- Develop and adopt the BDS Module
- Encourage the members to develop their business
- Change the SHG concept into BDS
- Promote the benefit of BDS for members in CU AGM
- Branch and Community Rewards
- Display in every branches

